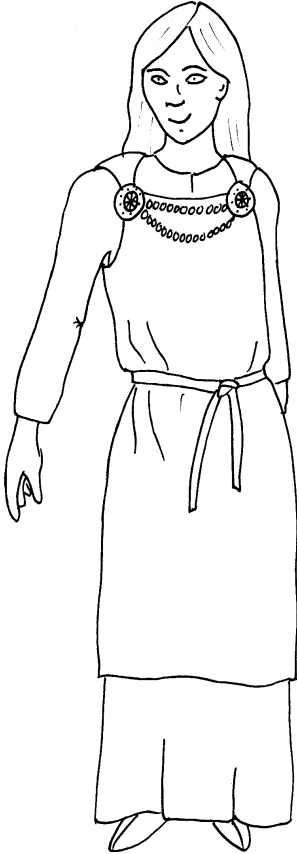


How to dress as an Early Saxon Female

General

Saxon clothes wear all sort of colours, so feel free to choose bright colours, as well as brown and green. Try to avoid patterns and prints. Choose plain if you can.

Female Costume



The basic female costume is a long dress which goes down to the ankles. A plain nightie might do the job. If you can't find a long dress try a t-shirt (with either long or short sleeves) and long skirt.

You can add to your long dress with a tube over dress – called a peplos. A large rectangle of cloth (a bath towel or old sheet stitched or stapled into a tube would work. Step into the tube and gather it up on your shoulders, pin it in place with safety pins. You might want to add some Saxon disc brooches.

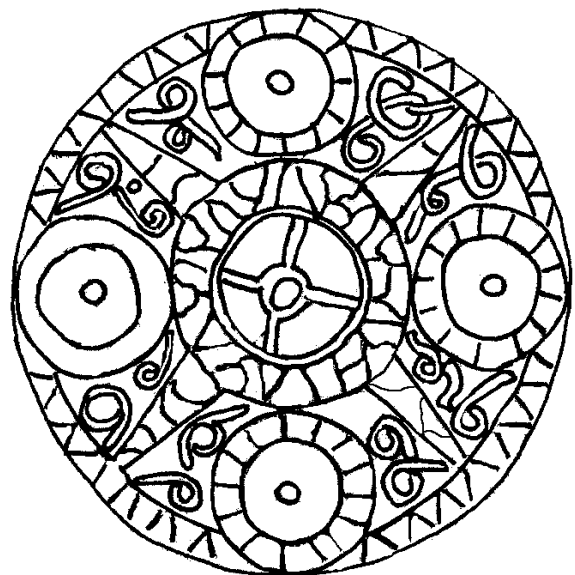
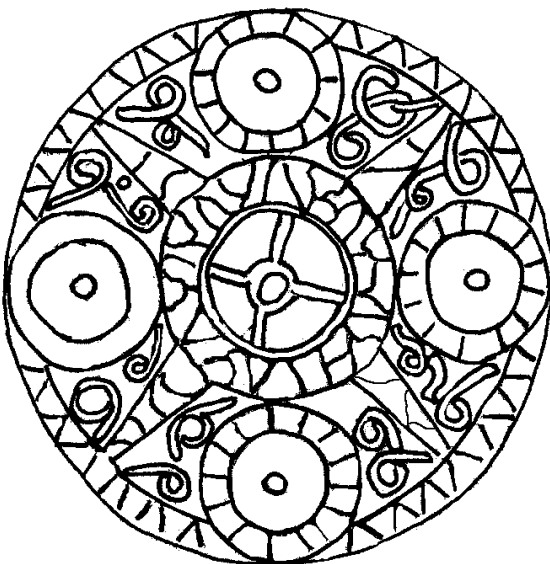
You could colour the brooches below, stick them on to some card and then tape a safety pin to the back.

Tie a belt (cloth or leather) around your waist, over the top of your tube dress.

If you want to, you could tie some beads between your brooches.

You can wear a cloak if it's cold. Perhaps a towel or blanket would do the job.

If you have long hair you could wear it in plaits or loose. You could cover your hair with a triangular scarf.

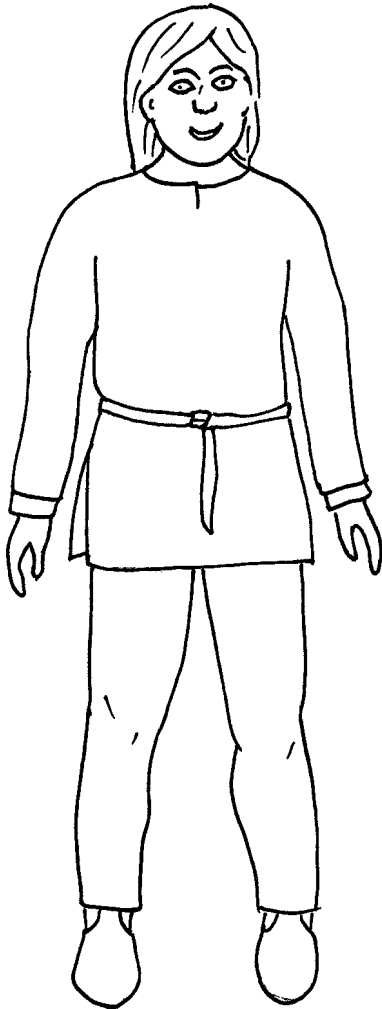


How to dress as a Early Saxon Male

General

Saxon clothes wear all sort of colours, so feel free to choose bright colours as well as brown and green. Try to avoid patterns and prints. Choose plain if you can.

Male Costume



The basic male costume is a short tunic which just covers the bottom. It has slit in each side up to the hip. An adult's t-shirt might do the job – but check with the owner before you add any slits! It could have long or short sleeves.

You need some plain trousers, perhaps pyjama bottoms? Some Saxons bound the bottom of their trousers with cord. You could use ribbon or string to tie them.

Tie a belt (cloth or leather) around your waist, over the top of your tunic.

If you want to, you could wear a pendant and some beads around your neck. You could colour the one below, stick it to some card board and attach it to some cord.

You can wear a cloak if it's cold. Perhaps and towel or blanket would do the job.

You could wear a cloth band around your head.

This pendant was originally made from gold and garnets. See if you can find out what colours it would have been. You can colour it like the original, or choose your own colours if you prefer.

